

# LILIAN

## RESIDENCES

BY LONDON GATE





# LILIAN

## RESIDENCES

### WHERE RADIANCE RESIDES

WELCOME TO LILIAN RESIDENCES, A NEW  
RESIDENTIAL OFFERING  
BY LONDON GATE IN DUBAI SOUTH.

Conceived as a sanctuary of light and refined simplicity, Lilian Residences is designed for those who find beauty in authenticity and elegance in restraint. Every detail is thoughtfully composed to cultivate a sense of effortless grace and intuitive living. Here, life unfolds in an atmosphere that is luminous, serene, and quietly transformative - a radiant home for those who seek clarity, calm, and inspired connection.





GROUND FLOOR

- STUDIO
- 2 BEDROOM

KEY PLAN



FLOOR PLANS:  
1. All dimensions are in imperial and metric and measured from finish to finish excluding construction tolerances.  
2. All materials, dimensions, and drawings are approximate only  
3. Information is subject to change without notice, at the developer's absolute discretion.  
4. Actual area may vary from the stated area.  
5. Drawings not to scale.  
6. All images used are for illustrative purposes only and do not represent the actual size, features, specifications, fittings, and furnishings.

LILLIAN  
RESIDENCES



# LILIAN

## RESIDENCES

BY LONDON GATE

SUITE AREA	36.87 SQ.M	396.87 SQ.FT
TERRACE AREA	8.66 SQ.M	93.22 SQ.FT
TOTAL AREA	45.53 SQ.M	490.08 SQ.FT

## G- 01

STUDIO

AREA = 490.08 SQFT

GROUND FLOOR



1.LIVING AREA	6.04*3.70 SQM
2.PANTRY	3.30*1.80 SQM
3.BATH	2.60*1.75 SQM
4.BALCONY	3.80*2.09 SQM

### FLOOR PLANS:

1. All dimensions are in imperial and metric and measured from finish to finish excluding construction tolerances.
2. All materials, dimensions, and drawings are approximate only
3. Information is subject to change without notice, at the developer's absolute discretion
4. Actual area may vary from the stated area.
5. Drawings not to scale.
6. All images used are for illustrative purposes only and do not represent the actual size, features, specifications, fittings, and furnishings.

KEY PLAN



KEY SECTION



GROUND FLOOR





# LILIAN

## RESIDENCES

BY LONDON GATE

SUITE AREA	80.15 SQ.M	862.733 SQ.FT
TERRACE AREA	39.22 SQ.M	422.16 SQ.FT
TOTAL AREA	119.37 SQ.M	1284.89 SQ.FT

## G- 02

2 BEDROOM

AREA = 1284.89 SQFT

GROUND FLOOR



1.LIVINGROOM	6.15*3.90 SQM
2.BEDROOM	4.10*3.79 SQM
3.BEDROOM	3.60*3.42 SQM
4.KITCHEN	2.80*2.40 SQM
5.POWDER	2.69*1.80 SQM
6.BATH	2.20*1.67 SQM
7.BALCONY	8.72*2.98 SQM
8.BALCONY	9.40*1.27 SQM

### FLOOR PLANS:

1. All dimensions are in imperial and metric and measured from finish to finish excluding construction tolerances.
2. All materials, dimensions, and drawings are approximate only.
3. Information is subject to change without notice, at the developer's absolute discretion.
4. Actual area may vary from the stated area.
5. Drawings not to scale.
6. All images used are for illustrative purposes only and do not represent the actual size, features, specifications, fittings, and furnishings.

KEY PLAN



KEY SECTION



GROUND FLOOR

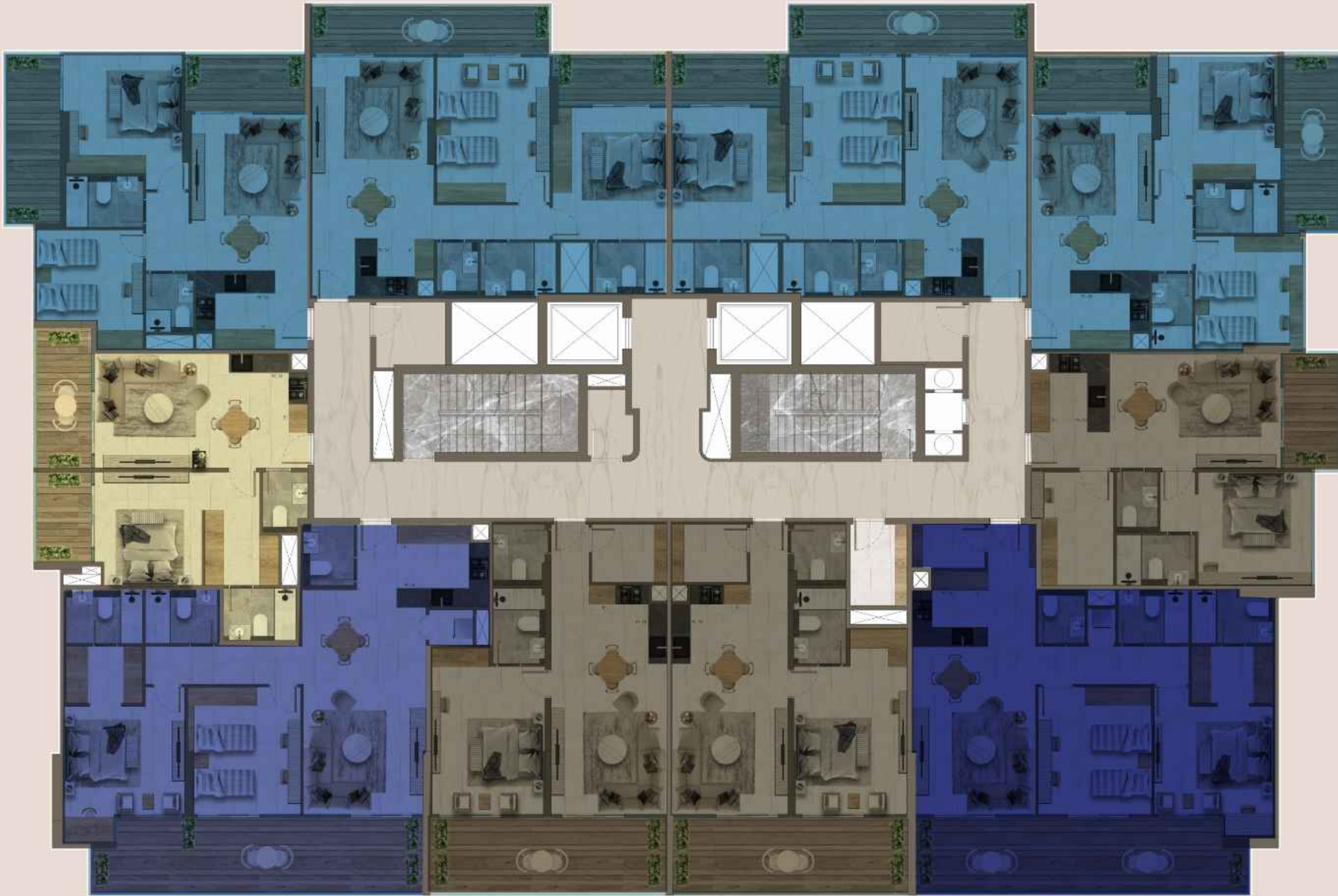
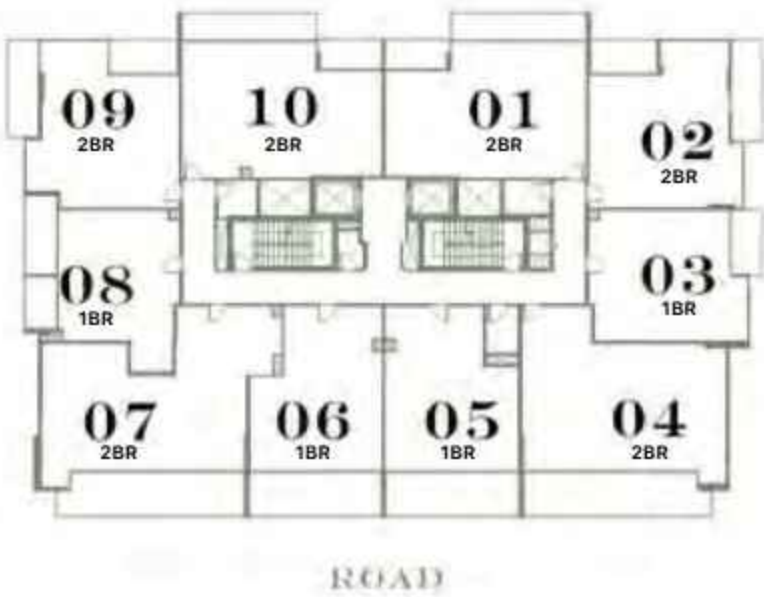




1<sup>ST</sup> TO 4<sup>TH</sup> FLOOR

- 1 BEDROOM
- 1 BEDROOM PLUS
- 2 BEDROOM - S
- 2 BEDROOM - L
- 2 BEDROOM PLUS

KEY PLAN



FLOOR PLANS:

1. All dimensions are in imperial and metric and measured from finish to finish excluding construction tolerances.
2. All materials, dimensions, and drawings are approximate only
3. Information is subject to change without notice, at the developer's absolute discretion.
4. Actual area may vary from the stated area.
5. Drawings not to scale.
6. All images used are for illustrative purposes only and do not represent the actual size, features, specifications, fittings, and furnishings.

LLIN  
RESIDENCES



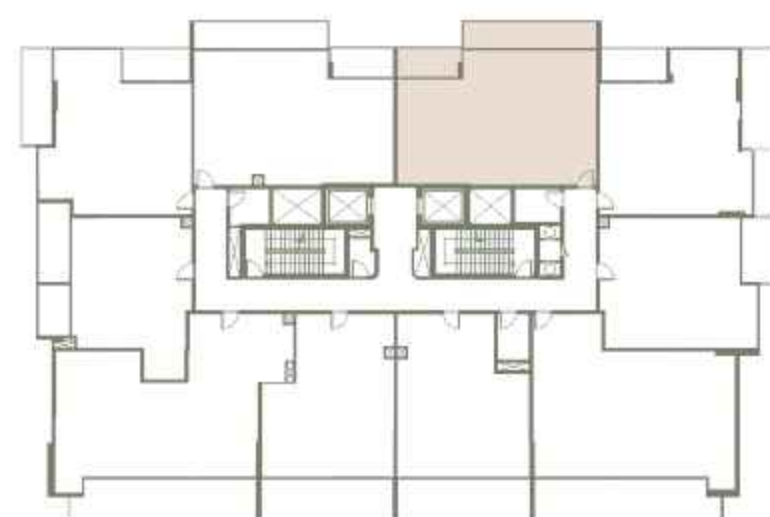
# LILIAN

## RESIDENCES

BY LONDON GATE

SUITE AREA	80.8 SQ.M	869.72 SQ.FT
TERRACE AREA	18.99 SQ.M	204.41 SQ.FT
TOTAL AREA	99.79 SQ.M	1074.13 SQ.FT

KEY PLAN



KEY SECTION



# 1 - 01

TWO BEDROOM

AREA = 1074.13 SQFT

FIRST FLOOR



1.LIVINGROOM	5.83*3.72 SQM
2.BEDROOM	4.63*3.76 SQM
3.BEDROOM	4.21*3.63 SQM
4.KITCHEN	2.40*1.70 SQM
5.BATH	2.45*1.60 SQM
6.BATH	2.40*1.70 SQM
7.POWDER	1.70*1.30 SQM
8.BALCONY	7.62*1.60 SQM
9.BALCONY	3.63*1.70 SQM

#### FLOOR PLANS:

1. All dimensions are in imperial and metric and measured from finish to finish excluding construction tolerances.
2. All materials, dimensions, and drawings are approximate only
3. Information is subject to change without notice, at the developer's absolute discretion.
4. Actual area may vary from the stated area.
5. Drawings not to scale.
6. All images used are for illustrative purposes only and do not represent the actual size, features, specifications, fittings, and furnishings.

LILIAN  
RESIDENCES



# LILIAN

## RESIDENCES

### BY LONDON GATE

SUITE AREA	71.32 SQ.M	767.68 SQ.FT
TERRACE AREA	18.22 SQ.M	196.12 SQ.FT
TOTAL AREA	89.54 SQ.M	963.80 SQ.FT

## 1 - 02

TWO BEDROOM

AREA = 963.80 SQFT

FIRST FLOOR



1.LIVINGROOM	5.10*3.90 SQM
2.BEDROOM	4.50*3.96 SQM
3.BEDROOM	3.41*3.40 SQM
4.KITCHEN	2.50*2.40 SQM
5.BATH	2.61*1.60 SQM
6.POWDER	2.30*1.30 SQM
7.BALCONY	5.80*1.83 SQM
8.BALCONY	3.70*1.90 SQM

#### FLOOR PLANS:

1. All dimensions are in imperial and metric and measured from finish to finish excluding construction tolerances.

2. All materials, dimensions, and drawings are approximate only.

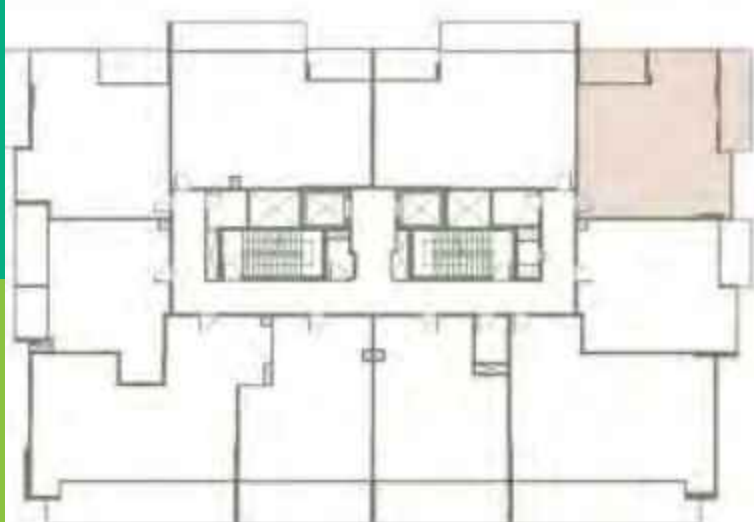
3. Information is subject to change without notice, at the developer's absolute discretion.

4. Actual area may vary from the stated area.

5. Drawings not to scale.

6. All images used are for illustrative purposes only and do not represent the actual size, features, specifications, fittings, and furnishings.

KEY PLAN



KEY SECTION



GROUND FLOOR





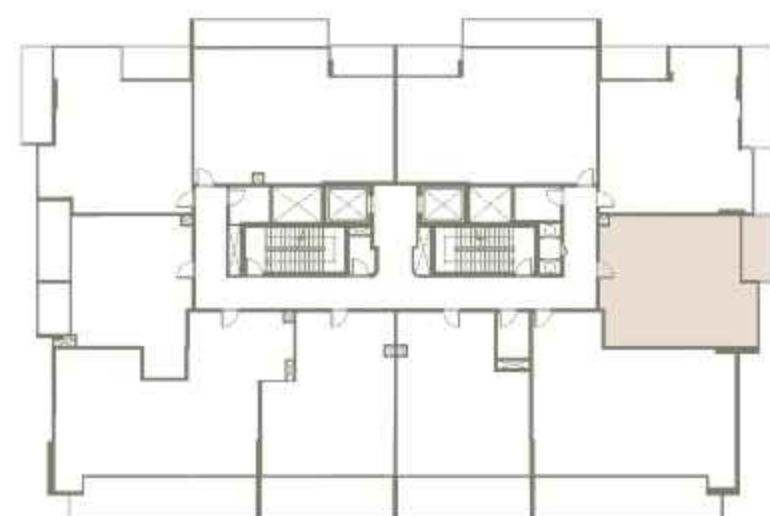
# LILIAN

## RESIDENCES

BY LONDON GATE

SUITE AREA	64.22 SQ.M	691.26 SQ.FT
TERRACE AREA	6.95 SQ.M	74.81 SQ.FT
TOTAL AREA	71.17 SQ.M	766.07 SQ.FT

KEY PLAN



KEY SECTION



# 1 - 03

ONE BEDROOM

AREA = 766.07 SQFT

FIRST FLOOR



1.LIVINGROOM	5.46*3.64 SQM
2.BEDROOM	4.82*3.60 SQM
3.KITCHEN	2.50*2.40 SQM
4.BATH	2.50*1.60 SQM
5.POWDER	1.90*1.30 SQM
6.LAU/STORE	3.60*2.30 SQM
7.BALCONY	3.89*1.83 SQM

#### FLOOR PLANS:

1. All dimensions are in imperial and metric and measured from finish to finish excluding construction tolerances.
2. All materials, dimensions, and drawings are approximate only.
3. Information is subject to change without notice, at the developer's absolute discretion.
4. Actual area may vary from the stated area.
5. Drawings not to scale.
6. All images used are for illustrative purposes only and do not represent the actual size, features, specifications, fittings, and furnishings.

# LILIAN

## RESIDENCES



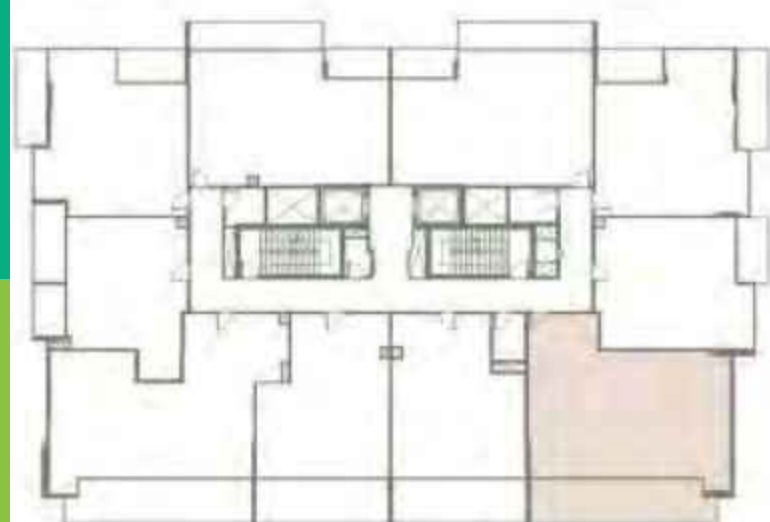
# LILIAN

## RESIDENCES

BY LONDON GATE

SUITE AREA	93.77 SQ.M	1009.33 SQ.FT
TERRACE AREA	26.18 SQ.M	281.80 SQ.FT
TOTAL AREA	119.95 SQ.M	1291.13 SQ.FT

KEY PLAN



KEY SECTION



GROUND FLOOR



# 1 - 04

TWO BEDROOM

AREA = 1291.13 SQFT

FIRST FLOOR

1.LIVINGROOM	5.35*3.80 SQM
2.BEDROOM	4.05*3.60 SQM
3.BEDROOM	4.05*3.77 SQM
4.DRESS	2.57*1.82 SQM
5.KITCHEN	2.47*2.40 SQM
6.BATH	2.57*1.45 SQM
7.BATH	2.25*1.70 SQM
8.POWDER	1.70*1.47 SQM
9.LAU/STORE	2.60*1.39 SQM
10.LAU/STORE	1.10*0.88 SQM
11.BALCONY	10.67*2.50 SQM

### FLOOR PLANS:

1. All dimensions are in imperial and metric and measured from finish to finish excluding construction tolerances.

2. All materials, dimensions, and drawings are approximate only.

3. Information is subject to change without notice, at the developer's absolute discretion.

4. Actual area may vary from the stated area.

5. Drawings not to scale.

6. All images used are for illustrative purposes only and do not represent the actual size, features, specifications, fittings, and furnishings.





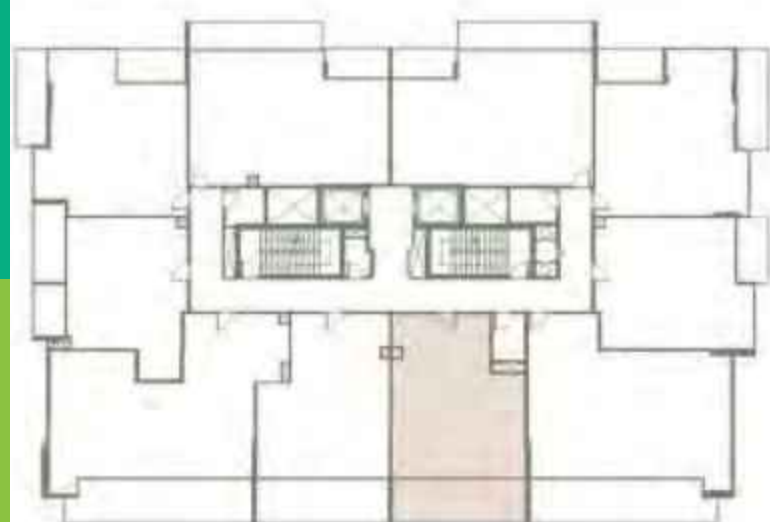
# LILIAN

## RESIDENCES

BY LONDON GATE

SUITE AREA	65.14 SQ.M	701.16 SQ.FT
TERRACE AREA	19.37 SQ.M	208.50 SQ.FT
TOTAL AREA	84.51 SQ.M	909.66 SQ.FT

KEY PLAN



KEY SECTION



GROUND FLOOR



# 1 - 05

one BEDROOM

AREA = 909.66 SQFT

FIRST FLOOR

1.LIVINGROOM	4.90*3.70 SQM
2.BEDROOM	4.70*3.55 SQM
3.KITCHEN	2.50*2.40 SQM
4.POWDER	1.94*1.65 SQM
5.DRESS	1.80*1.20 SQM
6.BATH	2.40*1.65 SQM
7.LAU/STORE	2.40*1.84 SQM
8.BALCONY	7.50*2.50 SQM

### FLOOR PLANS:

1. All dimensions are in imperial and metric and measured from finish to finish excluding construction tolerances.
2. All materials, dimensions, and drawings are approximate only.
3. Information is subject to change without notice, at the developer's absolute discretion.
4. Actual area may vary from the stated area.
5. Drawings not to scale.
6. All images used are for illustrative purposes only and do not represent the actual size, features, specifications, fittings, and furnishings.





# LILIAN

## RESIDENCES

BY LONDON GATE

SUITE AREA	63.95 SQ.M	688.35 SQ.FT
TERRACE AREA	19.37 SQ.M	208.50 SQ.FT
TOTAL AREA	83.32 SQ.M	896.85 SQ.FT

# 1 - 06

one BEDROOM

AREA = 896.85 SQFT

FIRST FLOOR



1.LIVINGROOM	4.90*3.70 SQM
2.BEDROOM	4.70*3.55 SQM
3.KITCHEN	2.50*2.40 SQM
4.POWDER	1.94*1.65 SQM
5.BATH	2.40*1.65 SQM
6.LAU/STORE	2.40*1.84 SQM
7.BALCONY	7.50*2.50 SQM

### FLOOR PLANS:

1. All dimensions are in Imperial and metric and measured from finish to finish excluding construction tolerances.
2. All materials, dimensions, and drawings are approximate only
3. Information is subject to change without notice, at the developer's absolute discretion
4. Actual area may vary from the stated area.
5. Drawings not to scale.
6. All images used are for illustrative purposes only and do not represent the actual size, features, specifications, fittings, and furnishings.

KEY PLAN



KEY SECTION



GROUND FLOOR





# LILIAN

## RESIDENCES

BY LONDON GATE

SUITE AREA	97.97 SQ.M	1054.54 SQ.FT
TERRACE AREA	26.1 SQ.M	280.94 SQ.FT
TOTAL AREA	124.07 SQ.M	1335.48 SQ.FT

# 1 - 07

TWO BEDROOM

AREA = 1335.48 SQFT

FIRST FLOOR

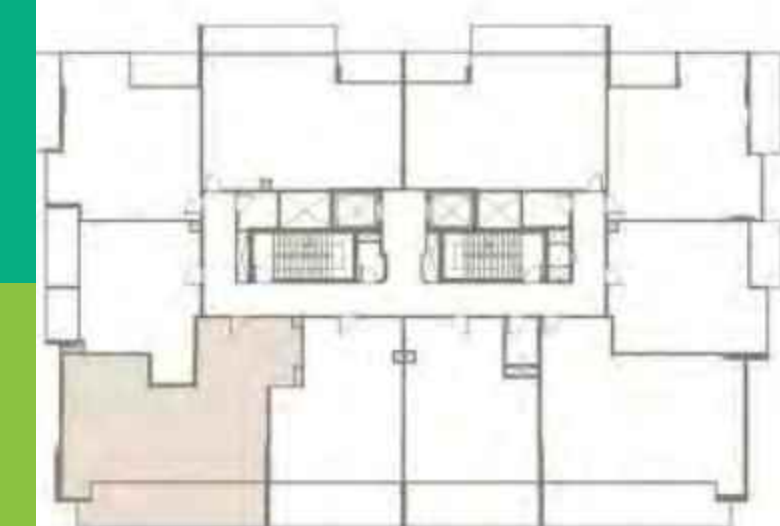


1.LIVINGROOM	6.60*3.80 SQM
2.BEDROOM	4.05*3.40 SQM
3.BEDROOM	4.33*3.82 SQM
4.DRESS	2.42*1.82 SQM
5.KITCHEN	2.93*2.64 SQM
6.BATH	2.42*1.70 SQM
7.BATH	2.30*1.70 SQM
8.POWDER	1.94*1.60 SQM
9.LAU/STORE	1.40*1.10 SQM
10.BALCONY	10.67*2.50 SQM

### FLOOR PLANS:

1. All dimensions are in imperial and metric and measured from finish to finish excluding construction tolerances.
2. All materials, dimensions, and drawings are approximate only.
3. Information is subject to change without notice, at the developer's absolute discretion.
4. Actual area may vary from the stated area.
5. Drawings not to scale.
6. All images used are for illustrative purposes only and do not represent the actual size, features, specifications, fittings, and furnishings.

KEY PLAN



KEY SECTION





# LILIAN

## RESIDENCES

BY LONDON GATE

SUITE AREA	54.43 SQ.M	585.88 SQ.FT
TERRACE AREA	14.31 SQ.M	154.03 SQ.FT
TOTAL AREA	68.74 SQ.M	739.91 SQ.FT

# 1 - 08

ONE BEDROOM

AREA = 739.91 SQFT

FIRST FLOOR

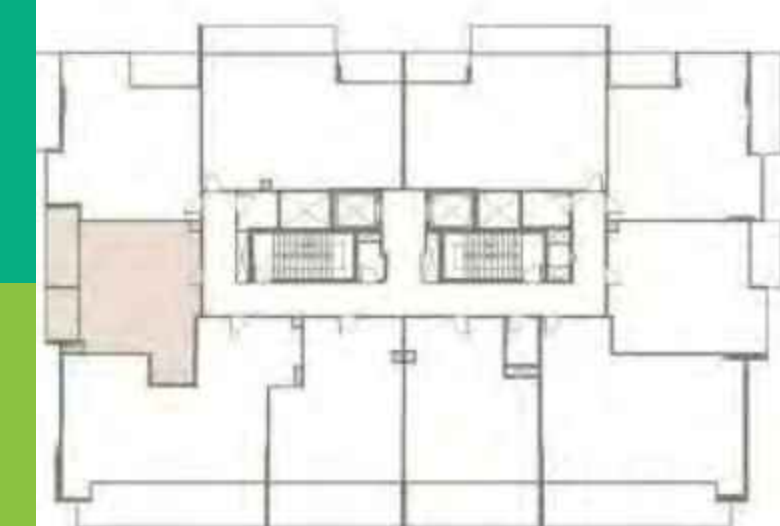


1.LIVINGROOM	4.30*3.64 SQM
2.BEDROOM	3.60*3.42 SQM
3.DRESS	2.40*2.35 SQM
4.KITCHEN	2.50*2.40 SQM
5.BATH	2.30*1.65 SQM
6.POWDER	1.90*1.43 SQM
7.BALCONY	4.47*1.85 SQM
8.BALCONY	2.86*1.85 SQM

### FLOOR PLANS:

1. All dimensions are in imperial and metric and measured from finish to finish excluding construction tolerances.
2. All materials, dimensions, and drawings are approximate only.
3. Information is subject to change without notice, at the developer's absolute discretion.
4. Actual area may vary from the stated area.
5. Drawings not to scale.
6. All images used are for illustrative purposes only and do not represent the actual size, features, specifications, fittings, and furnishings.

KEY PLAN



KEY SECTION



GROUND FLOOR





# LILIAN

## RESIDENCES

BY LONDON GATE

SUITE AREA	68.02 SQ.M	732.16 SQ.FT
TERRACE AREA	17.76 SQ.M	191.17 SQ.FT
TOTAL AREA	85.78 SQ.M	923.33 SQ.FT

# 1 - 09

TWO BEDROOM

AREA = 923.33 SQFT

FIRST FLOOR

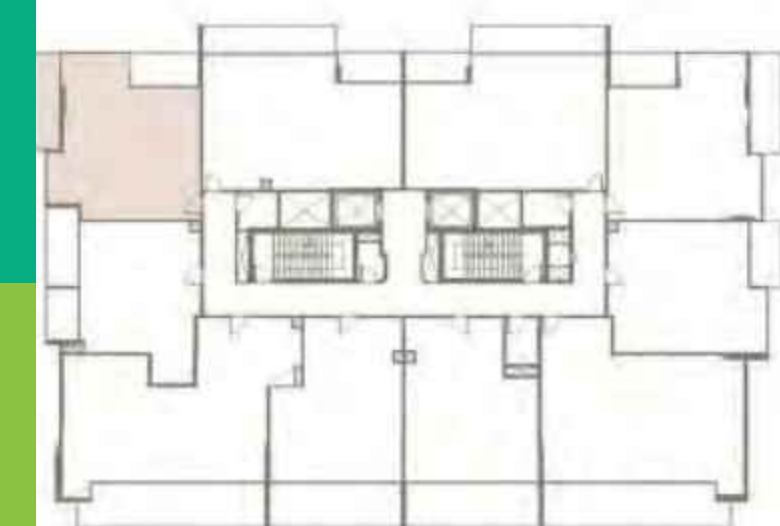


1.LIVINGROOM	5.00*3.70 SQM
2.BEDROOM	4.30*3.80 SQM
3.BEDROOM	3.40*2.87 SQM
4.KITCHEN	2.50*2.50 SQM
5.BATH	2.45*1.60 SQM
6.POWDER	1.75*1.50 SQM
7.BALCONY	5.60*1.80 SQM
8.BALCONY	3.80*1.90 SQM

### FLOOR PLANS:

1. All dimensions are in Imperial and metric and measured from finish to finish excluding construction tolerances
2. All materials, dimensions, and drawings are approximate only
3. Information is subject to change without notice, at the developer's absolute discretion.
4. Actual area may vary from the stated area.
5. Drawings not to scale.
6. All images used are for illustrative purposes only and do not represent the actual size, features, specifications, fittings, and furnishings.

KEY PLAN



KEY SECTION



GROUND FLOOR





# LILIAN

## RESIDENCES

BY LONDON GATE

SUITE AREA	80.8 SQ.M	869.72 SQ.FT
TERRACE AREA	18.98 SQ.M	204.30 SQ.FT
TOTAL AREA	99.78 SQ.M	1074.02 SQ.FT

# 1 - 10

TWO BEDROOM

AREA = 1074.02 SQFT

FIRST FLOOR



1.LIVINGROOM	5.83*3.86 SQM
2.BEDROOM	4.63*3.60 SQM
3.BEDROOM	4.21*3.63 SQM
4.KITCHEN	2.50*1.83 SQM
5.BATH	2.40*1.70 SQM
6.BATH	2.45*1.60 SQM
7.POWDER	1.70*1.30 SQM
8.BALCONY	7.57*1.60 SQM
9.BALCONY	3.62*1.70 SQM

### FLOOR PLANS:

1. All dimensions are in Imperial and metric and measured from finish to finish excluding construction tolerances.

2. All materials, dimensions, and drawings are approximate only.

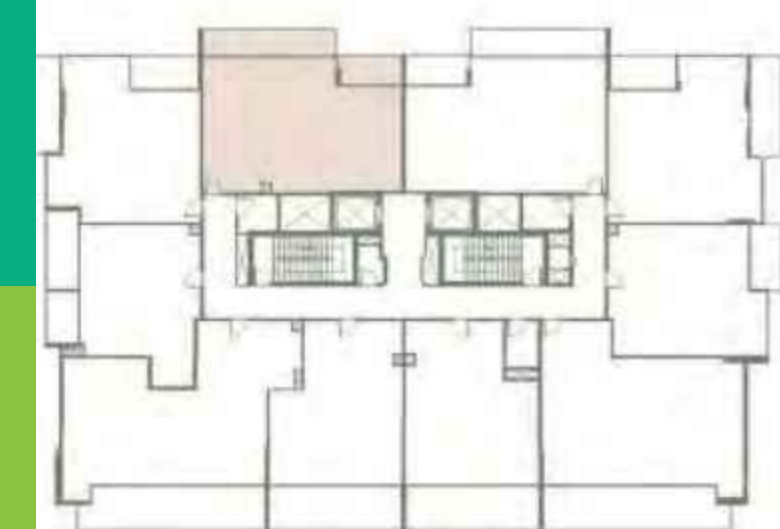
3. Information is subject to change without notice, at the developer's absolute discretion.

4. Actual area may vary from the stated area.

5. Drawings not to scale.

6. All images used are for illustrative purposes only and do not represent the actual size, features, specifications, fittings, and furnishings.

KEY PLAN



KEY SECTION



GROUND FLOOR

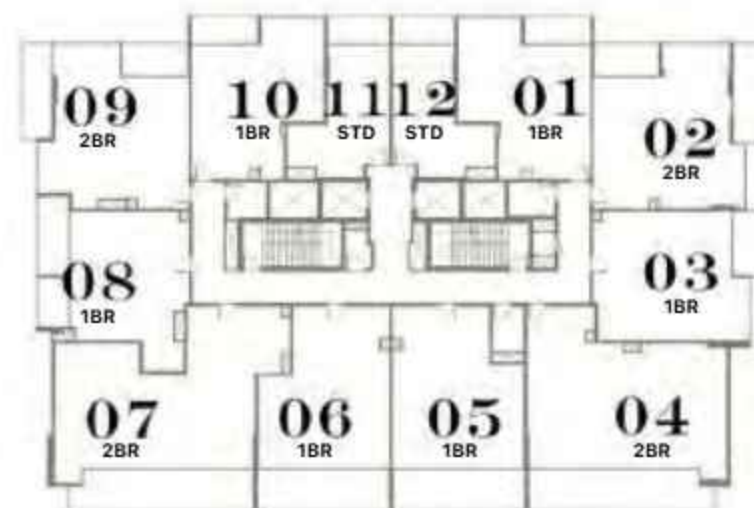




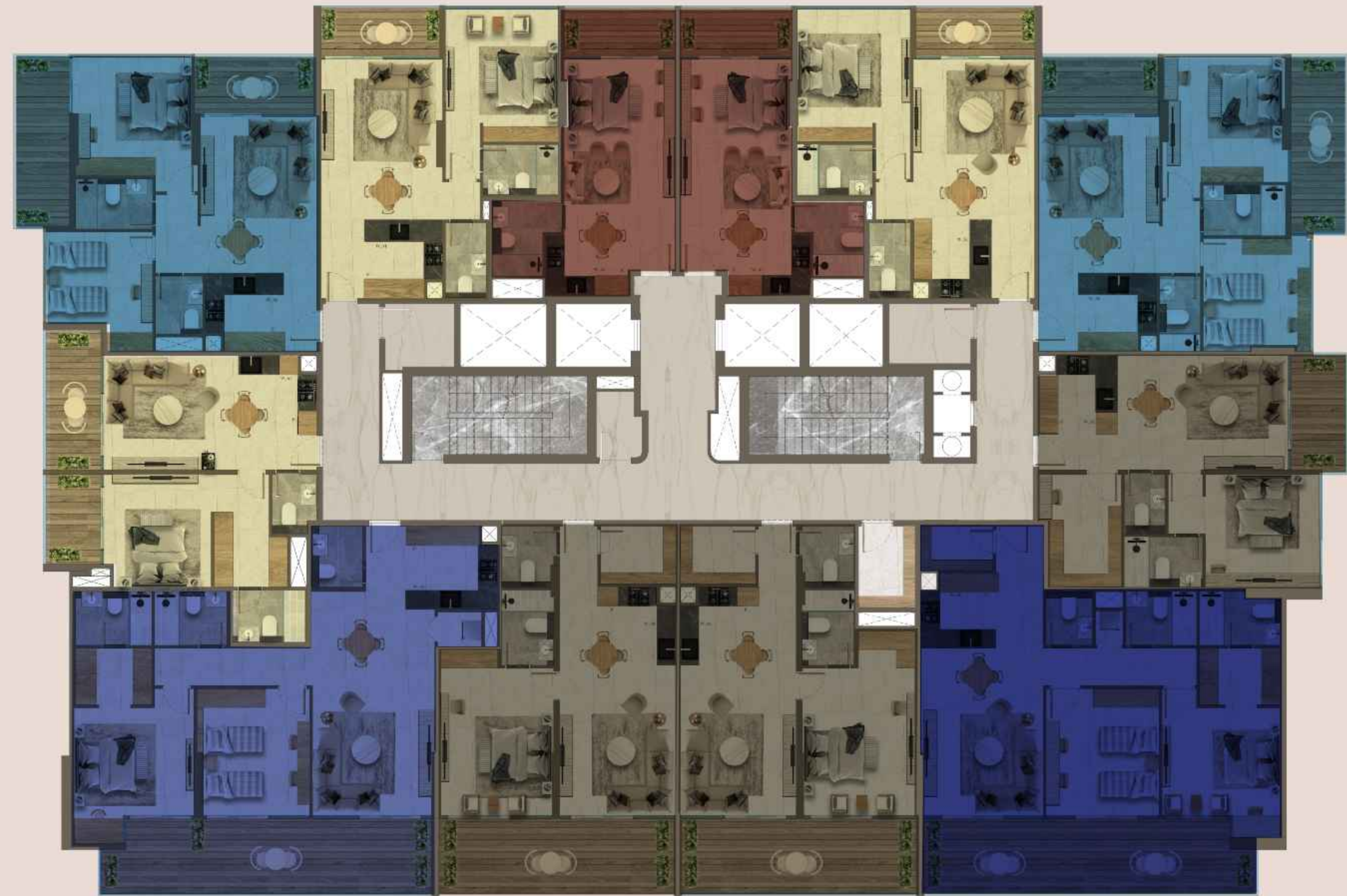
## 5<sup>TH</sup> & 6<sup>TH</sup> FLOOR

- STUDIO
- 1 BEDROOM
- 1 BEDROOM PLUS
- 2 BEDROOM - S
- 2 BEDROOM - L
- 2 BEDROOM PLUS

KEY PLAN



ROAD



### FLOOR PLANS:

1. All dimensions are in imperial and metric and measured from finish to finish excluding construction tolerances.
2. All materials, dimensions, and drawings are approximate only
3. Information is subject to change without notice, at the developer's absolute discretion.
4. Actual area may vary from the stated area.
5. Drawings not to scale.
6. All images used are for illustrative purposes only and do not represent the actual size, features, specifications, fittings, and furnishings.

LLIN  
RESIDENCES



# LILIAN

## RESIDENCES

BY LONDON GATE

SUITE AREA	58.37 SQ.M	628.29 SQ.FT
TERRACE AREA	6.5 SQ.M	69.97 SQ.FT
TOTAL AREA	64.87 SQ.M	698.25 SQ.FT

### 5 - 01

ONE BEDROOM

AREA = 698.25 SQFT

FIFTH FLOOR

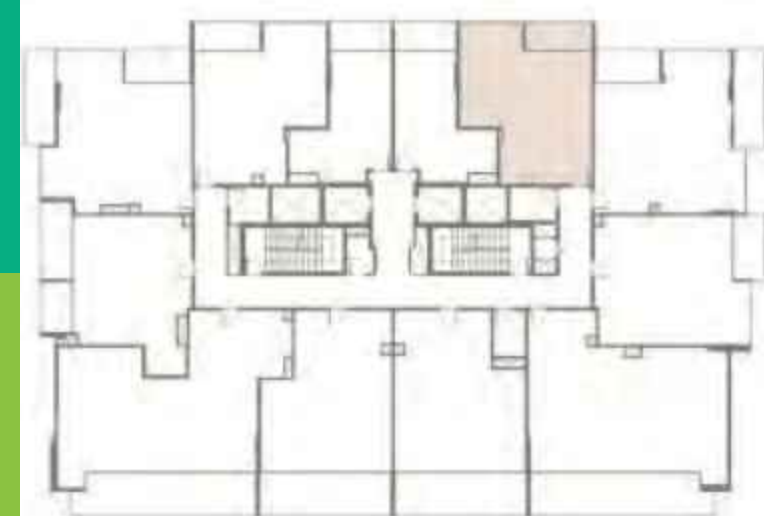


1.LIVINGROOM	5.13*3.87 SQM
2.BEDROOM	4.23*3.60 SQM
3.KITCHEN	2.50*2.50 SQM
4.BATH	2.40*1.90 SQM
5.POWDER	2.40*1.30 SQM
6.BALCONY	3.78*1.60 SQM

#### FLOOR PLANS:

1. All dimensions are in imperial and metric and measured from finish to finish excluding construction tolerances.
2. All materials, dimensions, and drawings are approximate only
3. Information is subject to change without notice, at the developer's absolute discretion.
4. Actual area may vary from the stated area.
5. Drawings not to scale.
6. All images used are for illustrative purposes only and do not represent the actual size, features, specifications, fittings, and furnishings.

KEY PLAN



KEY SECTION



GROUND FLOOR





# LILIAN

## RESIDENCES

BY LONDON GATE

SUITE AREA	71.32 SQ.M	767.68 SQ.FT
TERRACE AREA	18.22 SQ.M	196.12 SQ.FT
TOTAL AREA	89.54 SQ.M	963.80 SQ.FT

### 5 - 02

TWO BEDROOM

AREA = 963.80 SQFT

FIFTH FLOOR



1.LIVINGROOM	5.10*3.90 SQM
2.BEDROOM	4.00*3.96 SQM
3.BEDROOM	3.41*3.40 SQM
4.KITCHEN	2.50*2.40 SQM
5.BATH	2.61*1.60 SQM
6.POWDER	2.30*1.30 SQM
7.BALCONY	5.80*1.83 SQM
8.BALCONY	3.70*1.90 SQM

#### FLOOR PLANS:

1. All dimensions are in imperial and metric and measured from finish to finish excluding construction tolerances.

2. All materials, dimensions, and drawings are approximate only.

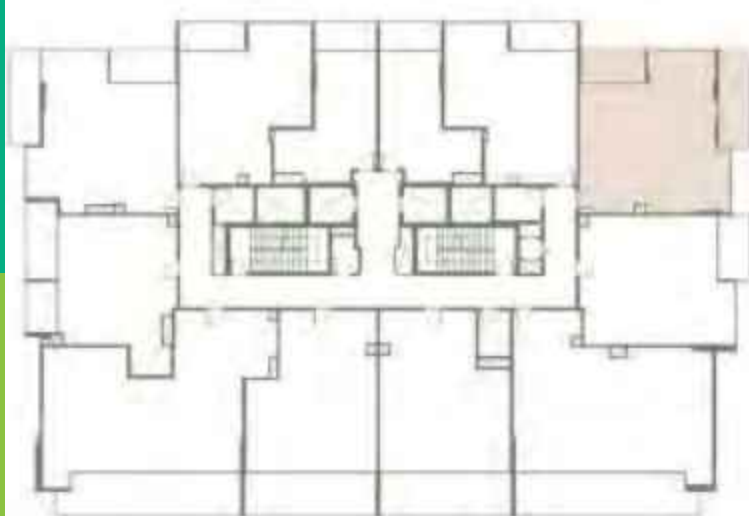
3. Information is subject to change without notice, at the developer's absolute discretion.

4. Actual area may vary from the stated area.

5. Drawings not to scale.

6. All images used are for illustrative purposes only and do not represent the actual size, features, specifications, fittings, and furnishings.

KEY PLAN



KEY SECTION



GROUND FLOOR





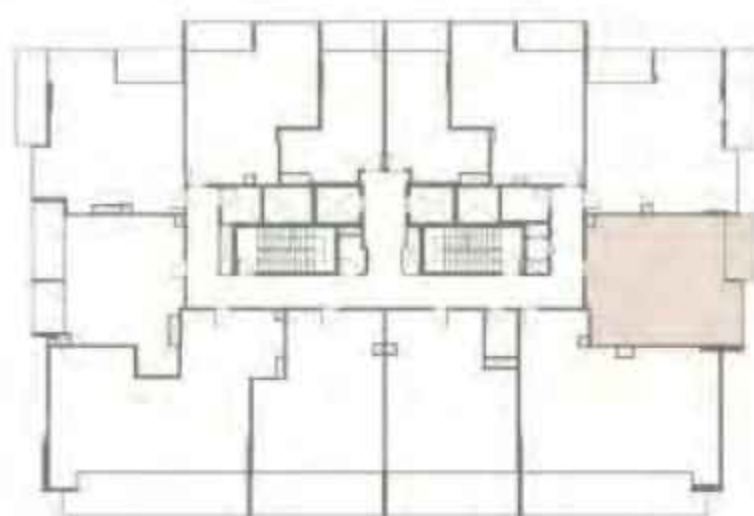
# LILIAN

## RESIDENCES

BY LONDON GATE

SUITE AREA	64.22 SQ.M	691.26 SQ.FT
TERRACE AREA	6.95 SQ.M	74.81 SQ.FT
TOTAL AREA	71.17 SQ.M	766.07 SQ.FT

KEY PLAN



KEY SECTION



GROUND FLOOR



# 5 - 03

ONE BEDROOM

AREA = 766.07 SQFT

FIFTH FLOOR



1.LIVINGROOM	5.49*3.64 SQM
2.BEDROOM	3.62*3.60 SQM
3.KITCHEN	2.50*2.40 SQM
4.STORE	3.60*2.30 SQM
5.POWDER	1.90*1.30 SQM
6.BATH	2.50*1.60 SQM
7.BALCONY	3.89*1.83 SQM

### FLOOR PLANS:

1. All dimensions are in imperial and metric and measured from finish to finish excluding construction tolerances.
2. All materials, dimensions, and drawings are approximate only
3. Information is subject to change without notice, at the developer's absolute discretion.
4. Actual area may vary from the stated area.
5. Drawings not to scale.
6. All images used are for illustrative purposes only and do not represent the actual size, features, specifications, fittings, and furnishings.



# LILIAN

## RESIDENCES

BY LONDON GATE

SUITE AREA	93.77 SQ.M	1009.33 SQ.FT
TERRACE AREA	26.18 SQ.M	281.80 SQ.FT
TOTAL AREA	119.95 SQ.M	1291.13 SQ.FT

### 5 - 04

TWO BEDROOM

AREA = 1291.13 SQFT

FIFTH FLOOR

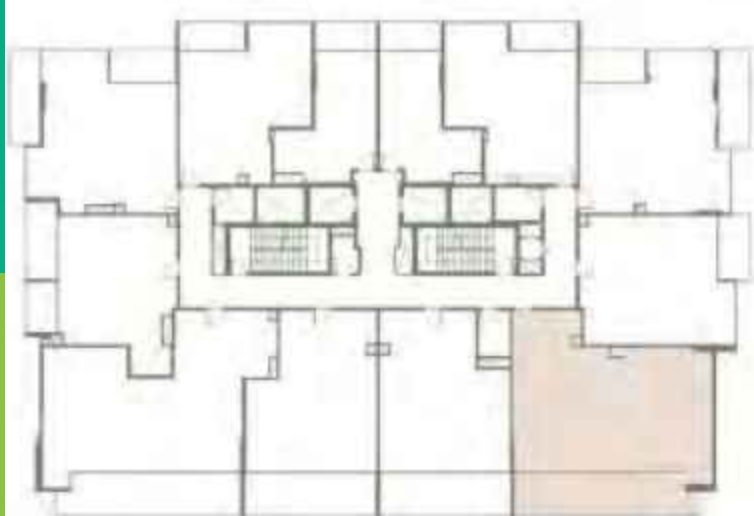


1.LIVINGROOM	5.35*3.80 SQM
2.BEDROOM	4.05*3.60 SQM
3.BEDROOM	4.05*3.77 SQM
4.DRESS	2.57*1.82 SQM
5.KITCHEN	2.47*2.40 SQM
6.STORE	2.60*1.39 SQM
7.POWDER	1.70*1.47 SQM
8.LAU	1.10*0.88 SQM
9.BATH	2.25*1.70 SQM
10.BATH	2.57*1.45 SQM
11.BALCONY	10.67*2.60 SQM

#### FLOOR PLANS:

1. All dimensions are in imperial and metric and measured from finish to finish excluding construction tolerances.
2. All materials, dimensions, and drawings are approximate only.
3. Information is subject to change without notice, at the developer's absolute discretion.
4. Actual area may vary from the stated area.
5. Drawings not to scale.
6. All images used are for illustrative purposes only and do not represent the actual size, features, specifications, fittings, and furnishings.

KEY PLAN



KEY SECTION



GROUND FLOOR





# LILIAN

## RESIDENCES

BY LONDON GATE

SUITE AREA	65.14 SQ.M	701.16 SQ.FT
TERRACE AREA	19.37 SQ.M	208.50 SQ.FT
TOTAL AREA	84.51 SQ.M	909.66 SQ.FT

### 5 - 05

ONE BEDROOM

AREA = 909.66 SQFT

FIFTH FLOOR

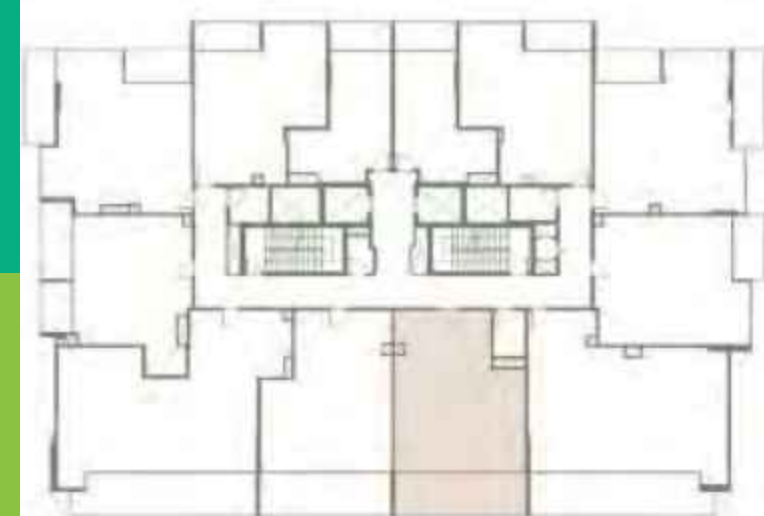


1.LIVINGROOM	4.90*3.70 SQM
2.BEDROOM	4.70*3.55 SQM
3.DRESS	1.80*1.20 SQM
4.KITCHEN	2.50*2.40 SQM
5.POWDER	1.94*1.65 SQM
6.BATH	2.40*1.65 SQM
7.LAU/STORE	2.40*1.84 SQM
8.BALCONY	7.50*2.50 SQM

#### FLOOR PLANS:

1. All dimensions are in imperial and metric and measured from finish to finish excluding construction tolerances.
2. All materials, dimensions, and drawings are approximate only.
3. Information is subject to change without notice, at the developer's absolute discretion.
4. Actual area may vary from the stated area.
5. Drawings not to scale.
6. All images used are for illustrative purposes only and do not represent the actual size, features, specifications, fittings, and furnishings.

KEY PLAN



KEY SECTION



GROUND FLOOR





# LILIAN

## RESIDENCES

BY LONDON GATE

SUITE AREA	63.95 SQ.M	688.35 SQ.FT
TERRACE AREA	19.34 SQ.M	208.17 SQ.FT
TOTAL AREA	83.29 SQ.M	896.53 SQ.FT

### 5 - 06

ONE BEDROOM

AREA = 896.53 SQFT

FIFTH FLOOR



1.LIVINGROOM	4.90*3.70 SQM
2.BEDROOM	4.70*3.55 SQM
3.KITCHEN	2.50*2.40 SQM
4.POWDER	1.94*1.65 SQM
5.BATH	2.40*1.65 SQM
6.LAU/STORE	2.40*1.84 SQM
7.BALCONY	7.50*2.50 SQM

#### FLOOR PLANS:

1. All dimensions are in imperial and metric and measured from finish to finish excluding construction tolerances.
2. All materials, dimensions, and drawings are approximate only.
3. Information is subject to change without notice, at the developer's absolute discretion.
4. Actual area may vary from the stated area.
5. Drawings not to scale.
6. All images used are for illustrative purposes only and do not represent the actual size, features, specifications, fittings, and furnishings.

KEY PLAN



KEY SECTION





# LILIAN

## RESIDENCES

BY LONDON GATE

SUITE AREA	97.98 SQ.M	1054.65 SQ.FT
TERRACE AREA	26.13 SQ.M	281.26 SQ.FT
TOTAL AREA	124.11 SQ.M	1335.91 SQ.FT

### 5 - 07

TWO BEDROOM

AREA = 1335.91 SQFT

FIFTH FLOOR

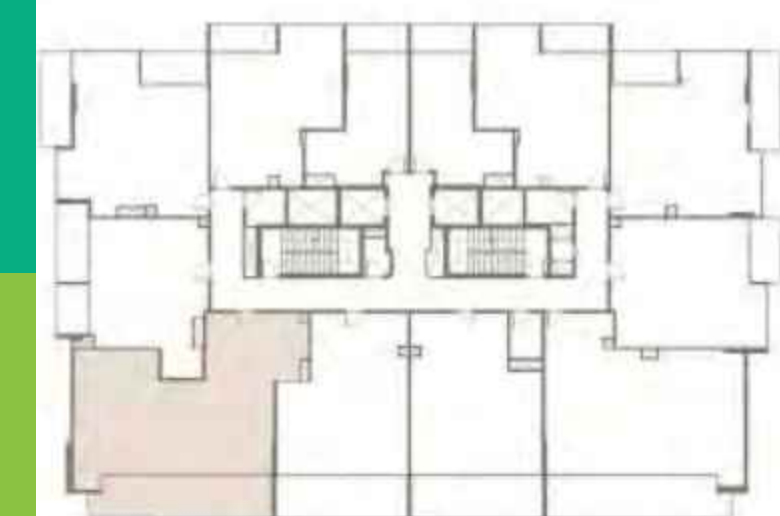


1.LIVINGROOM	6.60*3.80 SQM
2.BEDROOM	4.05*3.40 SQM
3.BEDROOM	4.05*3.82 SQM
4.DRESS	2.42*1.82 SQM
5.KITCHEN	2.93*2.64 SQM
6.BATH	2.42*1.70 SQM
7.BATH	2.30*1.70 SQM
8.POWDER	1.94*1.60 SQM
9.LAU	1.40*1.10 SQM
10.BALCONY	10.67*2.50 SQM

#### FLOOR PLANS:

1. All dimensions are in imperial and metric and measured from finish to finish excluding construction tolerances.
2. All materials, dimensions, and drawings are approximate only.
3. Information is subject to change without notice, at the developer's absolute discretion.
4. Actual area may vary from the stated area.
5. Drawings not to scale.
6. All images used are for illustrative purposes only and do not represent the actual size, features, specifications, fittings, and furnishings.

KEY PLAN



KEY SECTION



GROUND FLOOR





# LILIAN

## RESIDENCES

BY LONDON GATE

SUITE AREA	54.43 SQ.M	585.88 SQ.FT
TERRACE AREA	14.31 SQ.M	154.03 SQ.FT
TOTAL AREA	68.74 SQ.M	739.91 SQ.FT

### 5 - 08

ONE BEDROOM

AREA = 739.91 SQFT

FIFTH FLOOR

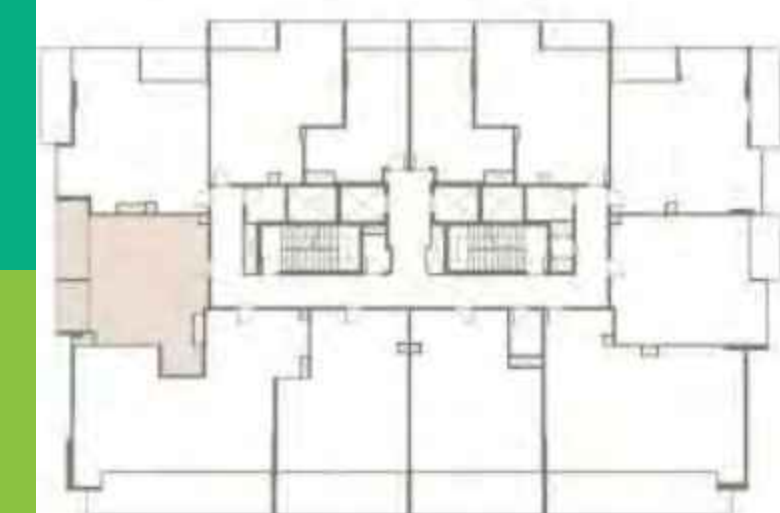
1. LIVING ROOM	4.33*3.64 SQM
2. BEDROOM	3.60*3.42 SQM
3. DRESS	2.40*2.35 SQM
4. KITCHEN	2.50*2.40 SQM
5. BATH	2.30*1.65 SQM
6. POWDER	1.90*1.43 SQM
7. BALCONY	4.47*1.85 SQM
8. BALCONY	2.86*1.85 SQM



#### FLOOR PLANS:

1. All dimensions are in imperial and metric and measured from finish to finish excluding construction tolerances.
2. All materials, dimensions, and drawings are approximate only.
3. Information is subject to change without notice, at the developer's absolute discretion.
4. Actual area may vary from the stated area.
5. Drawings not to scale.
6. All images used are for illustrative purposes only and do not represent the actual size, features, specifications, fittings, and furnishings.

KEY PLAN



KEY SECTION



GROUND FLOOR





# LILIAN

## RESIDENCES

BY LONDON GATE

SUITE AREA	68.02 SQ.M	732.16 SQ.FT
TERRACE AREA	17.76 SQ.M	191.17 SQ.FT
TOTAL AREA	85.78 SQ.M	923.33 SQ.FT

### 5 - 09

TWO BEDROOM

AREA = 923.33 SQFT

FIFTH FLOOR



1.LIVINGROOM	5.00*3.70 SQM
2.BEDROOM	4.30*3.80 SQM
3.BEDROOM	3.40*2.87 SQM
4.KITCHEN	2.50*2.50 SQM
5.BATH	2.45*1.40 SQM
6.POWDER	1.75*1.50 SQM
7.BALCONY	5.60*1.80 SQM
8.BALCONY	3.80*1.90 SQM

#### FLOOR PLANS:

1. All dimensions are in imperial and metric and measured from finish to finish excluding construction tolerances.

2. All materials, dimensions, and drawings are approximate only.

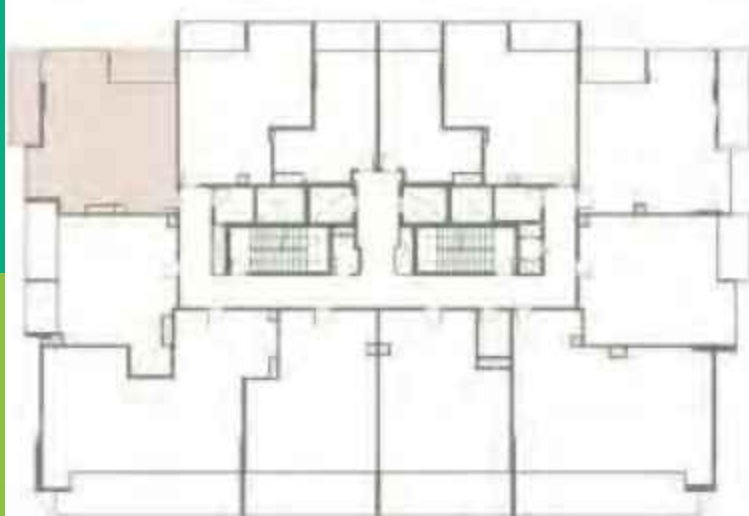
3. Information is subject to change without notice, at the developer's absolute discretion.

4. Actual area may vary from the stated area.

5. Drawings not to scale.

6. All images used are for illustrative purposes only and do not represent the actual size, features, specifications, fittings, and furnishings.

KEY PLAN



KEY SECTION



GROUND FLOOR





# LILIAN

## RESIDENCES

### BY LONDON GATE

SUITE AREA	58.37 SQ.M	628.29 SQ.FT
TERRACE AREA	6.49 SQ.M	69.86 SQ.FT
TOTAL AREA	64.86 SQ.M	698.15 SQ.FT

## 5 - 10

ONE BEDROOM

AREA = 698.15 SQFT

FIFTH FLOOR

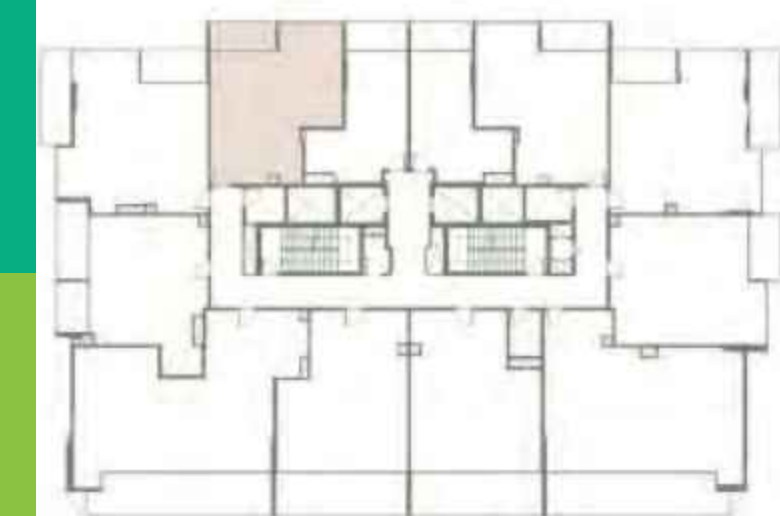
1.LIVINGROOM	5.13*3.88 SQM
2.BEDROOM	4.23*3.60 SQM
3.KITCHEN	2.50*2.50 SQM
4.BATH	2.40*1.90 SQM
5.POWDER	2.40*1.30 SQM
6.BALCONY	3.78*1.60 SQM



#### FLOOR PLANS:

1. All dimensions are in Imperial and metric and measured from finish to finish excluding construction tolerances.
2. All materials, dimensions, and drawings are approximate only.
3. Information is subject to change without notice, at the developer's absolute discretion.
4. Actual area may vary from the stated area.
5. Drawings not to scale.
6. All images used are for illustrative purposes only and do not represent the actual size, features, specifications, fittings, and furnishings.

KEY PLAN



KEY SECTION





# LILIAN

## RESIDENCES

BY LONDON GATE

SUITE AREA	33.7 SQ.M	362.74 SQ.FT
TERRACE AREA	6.05 SQ.M	65.12 SQ.FT
TOTAL AREA	39.75 SQ.M	427.87 SQ.FT

KEY PLAN



KEY SECTION



# 5 - 11

STUDIO

AREA = 427.87 SQFT

FIFTH FLOOR

1.LIVINGAREA	6.73*3.53 SQM
2.KITCHEN	2.73*1.90 SQM
3.BATH	2.40*1.60 SQM
4.BALCONY	3.53*1.60 SQM



### FLOOR PLANS:

1. All dimensions are in imperial and metric and measured from finish to finish excluding construction tolerances.
2. All materials, dimensions, and drawings are approximate only
3. Information is subject to change without notice, at the developer's absolute discretion.
4. Actual area may vary from the stated area.
5. Drawings not to scale.
6. All images used are for illustrative purposes only and do not represent the actual size, features, specifications, fittings, and furnishings.

LILIAN  
RESIDENCES



# LILIAN

## RESIDENCES

### BY LONDON GATE

SUITE AREA	33.7 SQ.M	362.74 SQ.FT
TERRACE AREA	6.05 SQ.M	65.12 SQ.FT
TOTAL AREA	39.75 SQ.M	427.87 SQ.FT

## 5 - 12

### STUDIO

AREA = 427.87 SQFT

### FIFTH FLOOR

1.LIVINGAREA	6.73*3.53 SQM
2.KITCHEN	2.73*1.90 SQM
3.BATH	2.40*1.60 SQM
4.BALCONY	3.53*1.60 SQM



#### FLOOR PLANS:

1. All dimensions are in imperial and metric and measured from finish to finish excluding construction tolerances.
2. All materials, dimensions, and drawings are approximate only.
3. Information is subject to change without notice, at the developer's absolute discretion.
4. Actual area may vary from the stated area.
5. Drawings not to scale.
6. All images used are for illustrative purposes only and do not represent the actual size, features, specifications, fittings, and furnishings.

KEY PLAN



KEY SECTION



GROUND FLOOR





# LILIAN

## RESIDENCES

### ROOF FLOOR

1. Indoor Gym
2. Pool
3. Kids Play Area
4. Outdoor Seating Area
5. Water Feature



#### FLOOR PLANS:

1. All dimensions are in imperial and metric and measured from finish to finish excluding construction tolerances.
2. All materials, dimensions, and drawings are approximate only.
3. Information is subject to change without notice, at the developer's absolute discretion.
4. Actual area may vary from the stated area.
5. Drawings not to scale.
6. All images used are for illustrative purposes only and do not represent the actual size, features, specifications, fittings, and furnishings.

LILIAN  
RESIDENCES



# LILIAN

## RESIDENCES

FOR MORE INFORMATION PLEASE CONTACT



 +971 55 476 7630  
 +971 4 368 7878  
 [info@afsrealestate.com](mailto:info@afsrealestate.com)  
 [www.afsrealestate.com](http://www.afsrealestate.com)



 +971 50 674 2020  
 +971 4 368 7878  
 [info@dubricks.com](mailto:info@dubricks.com)  
 [www.dubricks.com](http://www.dubricks.com)